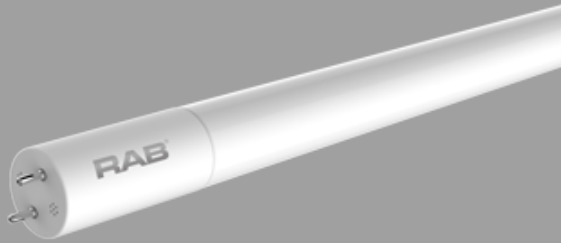


Project:

Type:

Prepared By:

Date:



UPC: 19813750811



## Features and Benefits

**FLUORESCENT REPLACEMENT** - Replace conventional fluorescent T8 and T12 linear tubes

**EASY TO INSTALL** - Simply cut the ballast out, and rewire sockets directly to line voltage

**SAVE ENERGY AND MONEY** - Provides same output as fluorescent but uses far less energy

**ENCLOSED FIXTURE RATED** - May be used in enclosed and open fixtures

**DIFFUSION COATING** - Will maintain the same light quality over time and won't yellow, shrink, or wrinkle

**BALLAST BYPASS** - Internal driver eliminates the need for external ballasts or drivers

**INSTANT ON** - No warmup time required, full brightness instantly

**LOW FLICKER** - Less than 5% flicker

**MERCURY FREE** - Environmentally friendly vs fluorescent technologies

**SHUNTED AND NON-SHUNTED** - Works on shunted and non-shunted sockets

## Technical Specifications

Product Type	Linear
Bulb Shape	T8
Nominal Length	4FT
Finish	Frosted
Wattage	14W
Wattage Equivalency	32W Fluorescent
Typical Lumen Output	1800
Efficacy	129 lm/W
Color Temperature	5000K Daylight
CRI	82
Base Type	G13
L70 Lifespan	50,000 hours
Operating Temperature	-20°C - 45°C
Dimmable	No
Beam Angle	240°
Warranty	5-Year, No-Compromise Warranty
Installation Type	Type B, Double Ended wiring
For Use in Emergency Fixtures	No
For Use Outdoors in Open Fixtures	No

## Electrical Characteristics

Input Voltage	120-277V
Power Factor	0.9
Operating Frequency	50 / 60 Hz
Input Current @ 120V	102mA
THDi	<20%

## Listings

UL Recognized	Yes
UL Classified	Yes
NSF Listing	Meets NSF/ANSI standards for use in Food Zone (non-contact), Splash, and Non-Food Zones
DLC Listed	This product is on the Design Lights Consortium (DLC) Qualified Products List and is eligible for rebates from DLC Member Utilities.
DLC Model Number	T8-14-48G-850-DE-BYP
DLC Product Code	PJ5VSR8I
CEC Status	Lawful for sale in California

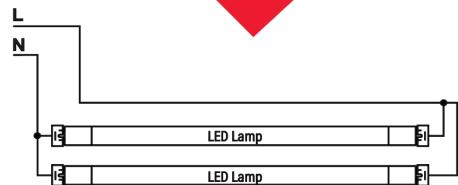
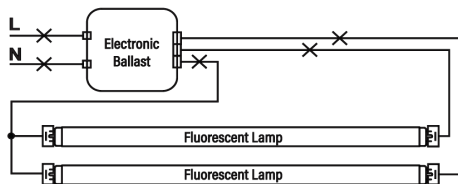
## Minimum Compartment Size

Length x Width x Height [mm]	Lamp Quantity
47.8 x 23.8 x 3.0	4

## Case and Pallet Dimensions

	QTY	LENGTH	WIDTH	HEIGHT
CASE	25	48.8	5.9	5.9
PALLET	1200	49.2	39.4	46.1

## Wiring Diagram



## Dimension

